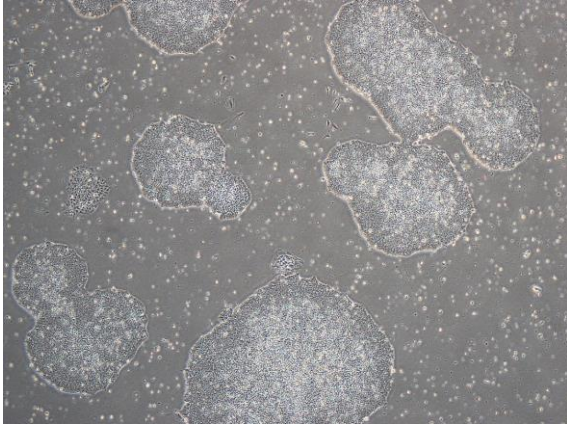
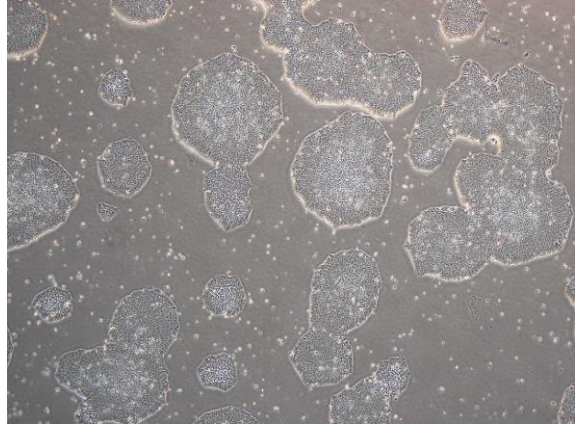


【 CiRA-j-1022 】 Morphology of iPSC colonies

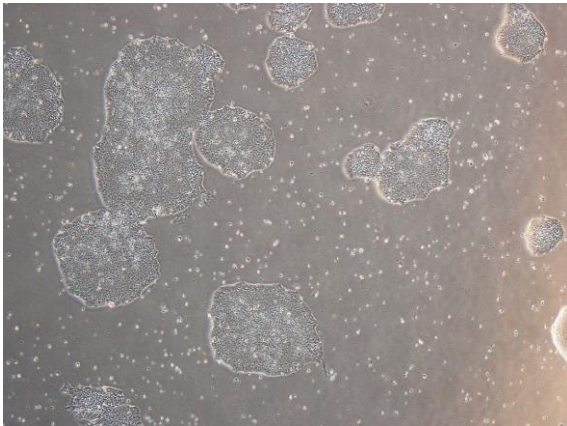
CiRA-j-1022-A: passage-2



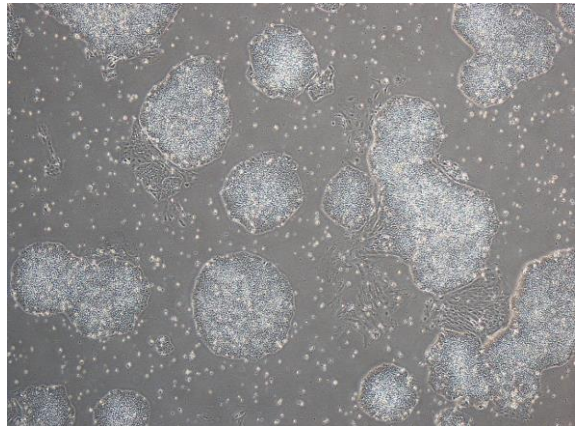
CiRA-j-1022-B: passage-2



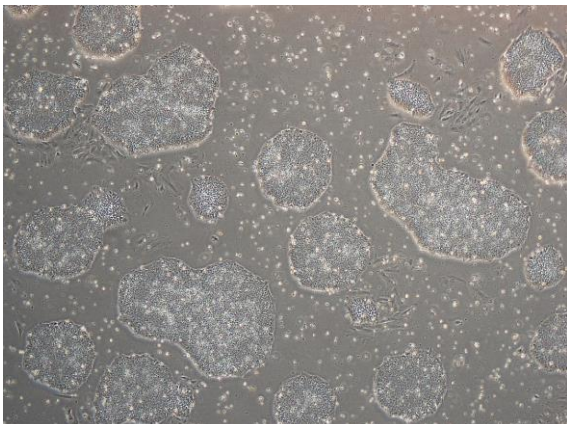
CiRA-j-1022-C: passage-2



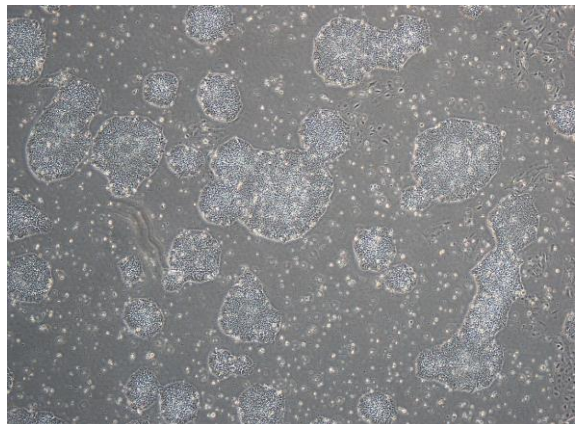
CiRA-j-1022-D: passage-2



CiRA-j-1022-E: passage-2



CiRA-j-1022-F: passage-2



(All images were captured at 4x magnification)